



DEGA NS II

GAS DETECTION TRANSMITTER

- Detection types: catalytic, electrochemical, infrared, photoionization (PID)
- Detection of toxic and combustible gases and oxygen
- For explosive environments ATEX zone 2.
- Protection level IP54/ IP66 (with protection cover)
- Produced in compliance with standard SIL



ISO 9001:2015
Quality management Systems
Système de Qualité
www.sgs.com



HISPACONTROL S.L.
Pº Delicias 65 Bis
28045 Madrid
Tel. 915 308 552
hc@hispacontrol.com
www.hispacontrol.com

Gas detection transmitter **DEGA NS II**

DEGA NS II transmitter is a part of the gas detection system. Transmitter is located in monitored premises in which critical situations due to accumulation of flammable or toxic substances can occur. The transmitter can be connected to control panels DEGA UPA III, DEGA UKA III and DEGA UDA III. Standard Output : RS485, without cable gland.

TECHNICAL SPECIFICATION:

Power supply:	8-30 V DC
Output:	4 - 20 mA, RS485, Modbus
Case protection level:	IP 54, with water protection cover DEGA WATER CAP IP66
Input:	1,2 W
Specification in compliance with ATEX:	II 3 G Ex db ec IIC T5/T4 Gc Tamb: -20°C - +60°C/0°C - +40°C
Placement:	BE3N2 - areas with danger of explosion, zone 2
Dimensions(WxHxD):	140 x 140 x 70 mm
Weight:	0,7 kg
Sensor technology:	catalytic, electrochemical, infrared, photoionization
Estimated life of sensor in clean environment:	catalytic (1-2 years),electrochemical (1-3 years), infrared (minimum 5 years), photoionization (1 year)
Relative humidity of the ambient air:	max. 95%

EXPANSION MODULES:

DEGA NS II RS485

MODBUS, Internal module in transmitter

Detected substance	Formula	Range	Sensor	Product type
Flammable and combustible gases	LEL	0-100 % LEL	CL	DEGA NSHC-CL 100 II
Flammable and combustible gases	LEL	0-100 % LEL	IL	DEGA NSHC-IL 100 II
VOC	C3H6O	0-5000 ppm	PID	DEGA NSVOC-PID II
Ammonia	NH3	0-100 ppm	EL	DEGA NSA-EL 100 II
Ammonia	NH3	0-1000 ppm	EL	DEGA NSA-EL 1000 II
Gasoline vapor	C6H14	0-100 % LEL	CL	DEGA NSB-CL 100 II
Hydrogen bromide	HBr	0-20 ppm	EL	DEGA NSHBr-EL 20 II
Butane	C4H10	0-100 % LEL	CL	DEGA NSP-CL 100 II
Butane	C4H10	0-100 % LEL	IL	DEGA NSP-IL 100 II
Butane	C4H10	0-5000 ppm	PID	DEGA NSP-PID II
Ethanol	C2H6O	0-100 % LEL	IL	DEGA NSC2H5OH-IL 100 II
Ethanol	C2H6O	0-450 ppm	PID	DEGA NSC2H5OH-PID 450 II
Ethene	C2H4	0-100 % LEL	IL	DEGA NSC2H4-IL 100 II
Ethylenoxid	C2H4O	0-10 ppm	EL	DEGA NSC2H4O-EL 10 II
Ethylenoxid	C2H4O	0-100 % LEL	IL	DEGA NSC2H4O-IL 100 II
Ethene	C2H4	0-10 ppm	EL	DEGA NSC2H4-EL 10 II
Formaldehyde	CH2O	0-10 ppm	EL	DEGA NSCH2O-EL 10 II
Phospine	PH3	0-5 ppm	EL	DEGA NSPH3-EL 5 II
Hexane	C6H14	0-100 % LEL	IL	DEGA NSC6H14-IL 100 II
Chlorine	Cl2	0-20 ppm	EL	DEGA NSCL2-EL 20 II
Hydrogen chloride	HCl	0-20 ppm	EL	DEGA NSHCL-EL 20 II
Hydrogen chloride	HCN	0-50 ppm	EL	DEGA NSHCN-EL 50 II
Oxygen	O2	0-100 % LEL	EL	DEGA NSO2-EL 100 II
Methane	CH4	0-100 % LEL	CL	DEGA NSM-CL 100 II

Detected substance	Formula	Range	Sensor	Product type
Methane	CH4	0-100 % LEL	IL	DEGA NSM-IL 100 II
Nitrogen dioxide	NO2	0-20 ppm	EL	DEGA NSNO2-EL 20 II
Nitric oxide	NO	0-250 ppm	EL	DEGA NSNO-EL 250 II
Nitrous oxide	N2O	0-1 % LEL	IL	DEGA NSN2O-IL 1 II
Chlorine dioxide	ClO2	0-5 ppm	EL	DEGA NSCLO2-EL 5 II
Sulfur dioxide	SO2	0-20 ppm	EL	DEGA NSSO2-EL 20 II
Carbon monoxide	CO	0-1000ppm	EL	DEGA NSCO-EL 1000 II
Carbon dioxide	CO2	0-5 % vol.	IL	DEGA NSCO2-IL 5 II
Ozone	O3	0-5 ppm	EL	DEGA NSO3-EL 5 II
Pentane	C5H12	0-100 % LEL	IL	DEGA NSC5H12-IL 100 II
Hydrogen peroxide	H2O2	0-100 ppm	EL	DEGA NSH2O2-EL 100 II
Propylene	C3H6	0-100 % LEL	IL	DEGA NSC3H6-IL 100 II
Silane	SiH4	0-50 ppm	EL	DEGA NSSiH4-EL 50 II
Hydrogen sulfide	H2S	0-50 ppm	EL	DEGA NSH2S-EL 50 II
Hydrogen sulfide	H2S	0-2000 ppm	EL	DEGA NSH2S-EL 2000 II
Hydrogen	H2	0-1000 ppm	EL	DEGA NSH-EL 1000 II
Hydrogen	H2	0-100 % LEL	CL	DEGA NSH-CL 100 II
Hydrogen	H2	0-4000 ppm	EL	DEGA NSH-EL 4000 II
Other toxic gases	-	According gas type	EL	More than 50 other gases
Other combustible gases	-	According gas type	IL	More than 50 other gases
Other combustible gases	-	According gas type	CL	More than 50 other gases



Transmitter is designed for detection in industrial and commercial environments requiring certification ATEX (Zone 2).

AVAILABLE ACCESSORIES:



Cover for transmitter NS II - mechanical



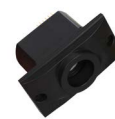
Cover for transmitter NS II - Stainless steel 316



DEGA GAS INLET NS II calibration adapter (cup)



DEGA WATER CAP Splash cap, NS II



Sensor DEGA NS II