

PRESYS®

Universal Process Calibrator

MCS-XV

MCS-XV is the new Presys advanced multifunction field calibrator and HART® communicator combining multiple software and hardware resources as well as communication features to achieve productivity gains in day-to-day calibration operation.



HISPACONTROL
INSTRUMENTACION INDUSTRIAL
HISPACONTROL S.L.
Pº Delicias 65 Bis
28045 Madrid
Tel. 915 308 552
hc@hispacontrol.com
www.hispacontrol.com

MCS-XV

Portable Version



Direct Printing of Calibration Report (pass / fail)
(PDF or connected USB printer)

MCS-XV-DT

Desktop Version



MCS-XV-RM

Rack Mounting Version
For use in 19" rack

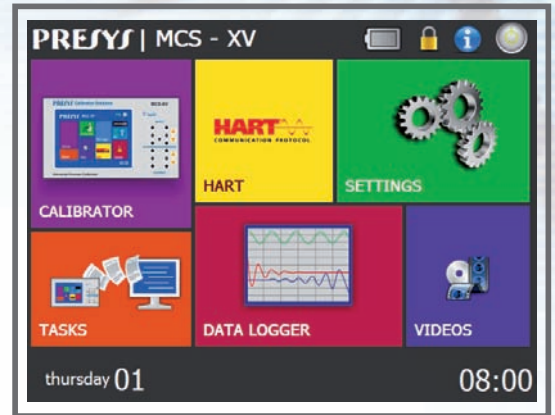


PRESYS Instruments Inc.



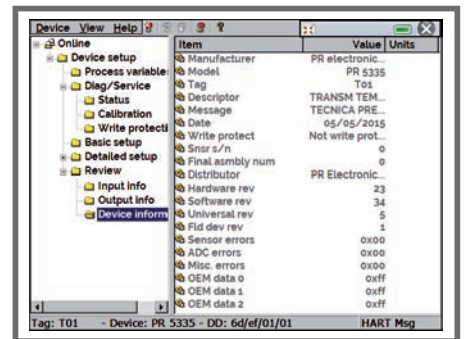
Universal Process Calibrator MCS-XV

- ✓ Operates all instrumentation signals: electrical, temperature, frequency and pressure.
- ✓ Up to four pressure sensors from 250 mmH₂O to 10,000 psi.



- ✓ Touch Screen display provides easy-to-read data and showing 2 simultaneous variables.
- ✓ Intuitive menu navigation helps in identifying calibrator information for any operational mode.

- ✓ Full Hart configurator (optional), which configures all available HART® devices, with DD library from FieldComm Group.
- ✓ 24 Vdc power supply for 2-wire transmitters, 250 Ω internal resistor configurable.



- ✓ Data Logger function for data acquisition and graphical visualization.
- ✓ Ethernet, Wi-Fi, Pen drive, Hart, USB connection Host / Device.

- ✓ Automated calibrations and generation of calibration report on direct connected USB printer or generation of PDF file.

POINT	EXPECTED	OBTAINED	ABS. ERR.	SPAN ERR.
0.00 °C	4.0000 mA	3.9955 mA	-0.0045 mA	-0.028%
25.00 °C	8.0000 mA	7.9907 mA	-0.0093 mA	-0.058%
50.00 °C	12.0000 mA	11.9897 mA	-0.0103 mA	-0.064%
75.00 °C	16.0000 mA	15.9934 mA	-0.0066 mA	-0.041%
100.00 °C	20.0000 mA	19.9968 mA	-0.0032 mA	-0.020%

POINT	EXPECTED	OBTAINED	ABS. ERR.	SPAN ERR.
0.00 °C	4.0000 mA	4.0001 mA	0.0001 mA	0.001%
25.00 °C	8.0000 mA	7.9949 mA	-0.0051 mA	-0.032%
50.00 °C	12.0000 mA	11.9911 mA	-0.0089 mA	-0.056%
75.00 °C	16.0000 mA	15.9932 mA	-0.0068 mA	-0.042%
100.00 °C	20.0000 mA	19.9983 mA	-0.0017 mA	-0.011%
75.00 °C	16.0000 mA	15.9995 mA	-0.0005 mA	-0.003%
50.00 °C	12.0000 mA	11.9924 mA	-0.0076 mA	-0.047%
25.00 °C	8.0000 mA	7.9975 mA	-0.0025 mA	-0.016%
0.00 °C	4.0000 mA	3.9981 mA	-0.0019 mA	-0.013%

Calibration report for tag T01

TASK DETAILS
 CREATED IN: 03/02/2014
 INSTRUMENT DETAILS:
 TAG: T01
 SERIAL NUMBER: 001.01.15
 MODEL: RTD Transmitter
 MANUFACTURE: Prosys
 INPUT RANGE: 0 TO 100 °C (RTD)
 OUTPUT RANGE: 4 TO 20 mA
 MAX BRICK = 0.1% SPAN (SPAN = 16 mA)
 LEAD TIME: 10 SECONDS

AS FOUND performed by John A.

POINT	EXPECTED	OBTAINED	ERROR	SPAN ERR.	PASS/FAIL
0.00 °C	4.0000 mA	3.9955 mA	-0.0045 mA	-0.028%	Pass
25.00 °C	8.0000 mA	7.9907 mA	-0.0093 mA	-0.058%	Pass
50.00 °C	12.0000 mA	11.9897 mA	-0.0103 mA	-0.064%	Pass
75.00 °C	16.0000 mA	15.9934 mA	-0.0066 mA	-0.041%	Pass
100.00 °C	20.0000 mA	19.9968 mA	-0.0032 mA	-0.020%	Pass

AS LEFT performed by John A.

POINT	EXPECTED	OBTAINED	ERROR	SPAN ERR.	PASS/FAIL
0.00 °C	4.0000 mA	4.0001 mA	0.0001 mA	0.001%	Pass
25.00 °C	8.0000 mA	7.9949 mA	-0.0051 mA	-0.032%	Pass
50.00 °C	12.0000 mA	11.9911 mA	-0.0089 mA	-0.056%	Pass
75.00 °C	16.0000 mA	15.9932 mA	-0.0068 mA	-0.042%	Pass
100.00 °C	20.0000 mA	19.9983 mA	-0.0017 mA	-0.011%	Pass
75.00 °C	16.0000 mA	15.9995 mA	-0.0005 mA	-0.003%	Pass
50.00 °C	12.0000 mA	11.9924 mA	-0.0076 mA	-0.047%	Pass
25.00 °C	8.0000 mA	7.9975 mA	-0.0025 mA	-0.016%	Pass
0.00 °C	4.0000 mA	3.9981 mA	-0.0019 mA	-0.012%	Pass

Standard serial numbers: 132.11.13
 Standard last calibration: 13/11/2013
 Operator signature: _____

Technical Specifications

Specifications - Inputs

Input Ranges		Resolution	Accuracy	Remarks
millivolt	-150 to 150 mV	0.001 mV	± 0.01 % FS ***	R _{input} > 10 MΩ auto-ranging
	-500 to -150 mV	0.01 mV	± 0.02 % FS	
	150 to 2450 mV	0.01 mV	± 0.02 % FS	
volt	-10 to 45 V	0.0001 V	± 0.02 % FS	R _{input} > 1 MΩ
mA	-5 to 24.5 mA	0.0001 mA	± 0.02 % FS	R _{input} < 120 Ω
resistance	0 to 400 Ω	0.01 Ω	± 0.01 % FS	Excitation current 0.85 mA auto-ranging
	400 to 2500 Ω	0.01 Ω	± 0.03 % FS	
frequency*	0 to 600 Hz	0.01 Hz	± 0.04 Hz	R _{input} > 50 kΩ Voltage DC _{max} = 30 V AC Signal from 0.3 to 30 V auto-ranging
	600 to 1300 Hz	0.1 Hz	± 0.2 Hz	
	1300 to 5000 Hz	1 Hz	± 2 Hz	
counter*	0 to 10 ⁸ - 1 count	1 count		The same remark as frequency Pulses Frequency < 3000 Hz
Pt-100	-200 to 850 °C / -328 to 1562 °F	0.01 °C / 0.01 °F	± 0.1 °C / ± 0.2 °F	IEC-751
Pt-1000	-200 to 400 °C / -328 to 752 °F	0.1 °C / 0.1 °F	± 0.1 °C / ± 0.2 °F	IEC-751
Cu-10	-200 to 260 °C / -328 to 500 °F	0.1 °C / 0.1 °F	± 2.0 °C / ± 4.0 °F	Minco 16-9
Ni-100	-60 to 250 °C / -76 to 482 °F	0.1 °C / 0.1 °F	± 0.2 °C / ± 0.4 °F	DIN-43760
probe**	-200 to 850 °C / -328 to 1562 °F	0.01 °C / 0.01 °F	± 0.1 °C / ± 0.2 °F	IEC-751
TC-J	-210 to 1200 °C / -346 to 2192 °F	0.1 °C / 0.1 °F	± 0.2 °C / ± 0.4 °F	IEC-584
TC-K	-270 to -150 °C / -454 to -238 °F	0.1 °C / 0.1 °F	± 0.5 °C / ± 1.0 °F	IEC-584
TC-T	-150 to 1370 °C / -238 to 2498 °F	0.1 °C / 0.1 °F	± 0.2 °C / ± 0.4 °F	IEC-584
	-260 to -200 °C / -436 to -328 °F	0.1 °C / 0.1 °F	± 0.6 °C / ± 1.2 °F	
	-200 to -75 °C / -328 to -103 °F	0.1 °C / 0.1 °F	± 0.4 °C / ± 0.8 °F	
TC-B	-75 to 400 °C / -103 to 752 °F	0.1 °C / 0.1 °F	± 0.2 °C / ± 0.4 °F	IEC-584
	50 to 250 °C / 122 to 482 °F	0.1 °C / 0.1 °F	± 2.5 °C / ± 5.0 °F	
	250 to 500 °C / 482 to 932 °F	0.1 °C / 0.1 °F	± 1.5 °C / ± 3.0 °F	
	500 to 1200 °C / 932 to 2192 °F	0.1 °C / 0.1 °F	± 1.0 °C / ± 2.0 °F	
TC-R	1200 to 1820 °C / 2192 to 3308 °F	0.1 °C / 0.1 °F	± 0.7 °C / ± 1.4 °F	IEC-584
	-50 to 300 °C / -58 to 572 °F	0.1 °C / 0.1 °F	± 1.0 °C / ± 2.0 °F	
TC-S	300 to 1760 °C / 572 to 3200 °F	0.1 °C / 0.1 °F	± 0.7 °C / ± 1.4 °F	IEC-584
	-50 to 300 °C / -58 to 572 °F	0.1 °C / 0.1 °F	± 1.0 °C / ± 2.0 °F	
TC-E	300 to 1760 °C / 572 to 3200 °F	0.1 °C / 0.1 °F	± 0.7 °C / ± 1.4 °F	IEC-584
	-270 to -150 °C / -454 to -238 °F	0.1 °C / 0.1 °F	± 0.3 °C / ± 0.6 °F	
TC-N	-150 to 1000 °C / -238 to 1832 °F	0.1 °C / 0.1 °F	± 0.1 °C / ± 0.2 °F	IEC-584
	-260 to -200 °C / -436 to -328 °F	0.1 °C / 0.1 °F	± 1.0 °C / ± 2.0 °F	
TC-L	-200 to -20 °C / -328 to -4 °F	0.1 °C / 0.1 °F	± 0.4 °C / ± 0.8 °F	IEC-584
	-20 to 1300 °C / -4 to 2372 °F	0.1 °C / 0.1 °F	± 0.2 °C / ± 0.4 °F	
	-200 to 900 °C / -328 to 1652 °F	0.1 °C / 0.1 °F	± 0.2 °C / ± 0.4 °F	
TC-C	0 to 1500 °C / 32 to 2732 °F	0.1 °C / 0.1 °F	± 0.5 °C / ± 1.0 °F	W5Re / W26Re
	1500 to 2320 °C / 2732 to 4208 °F	0.1 °C / 0.1 °F	± 0.7 °C / ± 1.4 °F	

(*) Accuracy valid since the frequency output is not configured.

(**) The Probe is a separate input used as reference thermometer. The related accuracy is relative only to the MCS-XV.

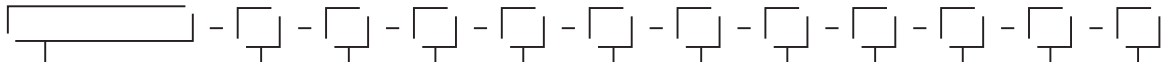
(***) FS = Full Scale.

Specifications - Outputs

Outputs Ranges		Resolution	Accuracy	Remarks
millivolt	-10 to 110 mV	0.001 mV	± 0.02 % FS	R _{out} < 0,3 Ω
volt	-0.5 to 12 V	0.0001 V	± 0.02 % FS	R _{out} < 0,3 Ω
mA	0 to 24 mA	0.0001 mA	± 0.02 % FS	R _{max} = 700 Ω
2-wire transmitter (XTR)	4 to 24 mA	0.0001 mA	± 0.02 % FS	V _{max} = 60 V
resistance	0 to 400 Ω	0.01 Ω	± 0.02 % FS	For external excitation current of 1.0 mA
	0 to 2500 Ω	0.1 Ω	± 0.03 % FS	
frequency	0 to 100 Hz	0.01 Hz	± 0.02 Hz	Peak value: 22 V / 25 mA max.
	0 to 10000 Hz	1 Hz	± 2 Hz	
	0 to 10 ⁸ - 1 pulse	1 pulse		
pulse	0 to 10 ⁸ - 1 pulse	1 pulse		Peak value: 22 V / 25 mA max. Pulses frequency up to 10000 Hz
Pt-100	-200 to 850 °C / -328 to 1562 °F	0.01 °C / 0.01 °F	± 0.2 °C / ± 0.4 °F	IEC-751
Pt-1000	-200 to 400 °C / -328 to 752 °F	0.1 °C / 0.1 °F	± 0.1 °C / ± 0.2 °F	IEC-751
Cu-10	-200 to 260 °C / -328 to 500 °F	0.1 °C / 0.1 °F	± 2.0 °C / ± 4.0 °F	Minco 16-9
Ni-100	-60 to 250 °C / -76 to 482 °F	0.1 °C / 0.1 °F	± 0.2 °C / ± 0.4 °F	DIN-43760
TC-J	-210 to 1200 °C / -346 to 2192 °F	0.1 °C / 0.1 °F	± 0.4 °C / ± 0.8 °F	IEC-584
TC-K	-270 to -150 °C / -454 to -238 °F	0.1 °C / 0.1 °F	± 1.0 °C / ± 2.0 °F	IEC-584
TC-T	-150 to 1370 °C / -238 to 2498 °F	0.1 °C / 0.1 °F	± 0.4 °C / ± 0.8 °F	IEC-584
	-260 to -200 °C / -436 to -328 °F	0.1 °C / 0.1 °F	± 1.2 °C / ± 2.4 °F	
	-200 to -75 °C / -328 to -103 °F	0.1 °C / 0.1 °F	± 0.8 °C / ± 1.6 °F	
TC-B	-75 to 400 °C / -103 to 752 °F	0.1 °C / 0.1 °F	± 0.4 °C / ± 0.8 °F	IEC-584
	50 to 250 °C / 122 to 482 °F	0.1 °C / 0.1 °F	± 5.0 °C / ± 10.0 °F	
	250 to 500 °C / 482 to 932 °F	0.1 °C / 0.1 °F	± 3.0 °C / ± 6.0 °F	
	500 to 1200 °C / 932 to 2192 °F	0.1 °C / 0.1 °F	± 2.0 °C / ± 4.0 °F	
TC-R	1200 to 1820 °C / 2192 to 3308 °F	0.1 °C / 0.1 °F	± 1.4 °C / ± 2.8 °F	IEC-584
	-50 to 300 °C / -58 to 572 °F	0.1 °C / 0.1 °F	± 2.0 °C / ± 4.0 °F	
TC-S	300 to 1760 °C / 572 to 3200 °F	0.1 °C / 0.1 °F	± 1.4 °C / ± 2.8 °F	IEC-584
	-270 to -150 °C / -454 to -238 °F	0.1 °C / 0.1 °F	± 0.6 °C / ± 1.2 °F	
TC-E	-150 to 1000 °C / -238 to 1832 °F	0.1 °C / 0.1 °F	± 0.2 °C / ± 0.4 °F	IEC-584
	-260 to -200 °C / -436 to -328 °F	0.1 °C / 0.1 °F	± 2.0 °C / ± 4.0 °F	
TC-N	-200 to -20 °C / -328 to -4 °F	0.1 °C / 0.1 °F	± 0.8 °C / ± 1.6 °F	IEC-584
	-20 to 1300 °C / -4 to 2372 °F	0.1 °C / 0.1 °F	± 0.4 °C / ± 0.8 °F	
	-200 to 900 °C / -328 to 1652 °F	0.1 °C / 0.1 °F	± 0.4 °C / ± 0.8 °F	
TC-L	0 to 1500 °C / 32 to 2732 °F	0.1 °C / 0.1 °F	± 0.5 °C / ± 1.0 °F	W5Re / W26Re
	1500 to 2320 °C / 2732 to 4208 °F	0.1 °C / 0.1 °F	± 0.7 °C / ± 1.4 °F	

The values of accuracy cover one year period and for a temperature range between 20 and 26 °C. Outside this range, the thermal stability is 0.001% FS / °C with reference to 23 °C. Thermocouple with internal cold junction compensation, one must consider the error of this cold junction compensation of up to ± 0.2 °C or ± 0.4 °F.

Order Code



Model

- MCS-XV** - Universal Process Calibrator MCS-XV Portable
- MCS-XV-RM** - Universal Process Calibrator MCS-XV Rack Mounting Version
- MCS-XV-DT** - Universal Process Calibrator MCS-XV Desktop Version

Hart® Communication

- NH** - No Hart® Communication
- CH** - Hart Calibrator (basic commands: zero, span, trim mA)
- FH** - Full-Hart Configurator, with DD library from FieldComm Group and one-year upgrade.

Number of Pressure Inputs

- 0** - no pressure sensors
- 1** - one sensor
- 2** - two sensors
- 3** - three sensors
- 4** - four sensors

RANGE	Input 1	RESOLUTION	ACCURACY*	REMARKS
(0)	0 – 250 mmH ₂ O	0.001	± 0.05 % FS*	Gage pressure
(1)	0 – 1 psi	0.0001	± 0.05 % FS	Used with air or inert gases
(2)	0 – 5 psi	0.0001	± 0.025 % FS	
(3)	0 – 15 psi	0.0001	± 0.025 % FS	Gage or absolute pressure
(4)	0 – 30 psi	0.0001	± 0.025 % FS	Used with fluids (Gases or liquids)
(5)	0 – 100 psi	0.001	± 0.025 % FS	compatible with 316 L stainless steel
(6)	0 – 250 psi	0.001	± 0.025 % FS	
(7)	0 – 500 psi	0.01	± 0.025 % FS	
(8)	0 – 1000 psi	0.01	± 0.025 % FS	
(9)	0 – 3000 psi	0.01	± 0.025 % FS	
(10)	0 – 5000 psi	0.1	± 0.025 % FS	
(11)	0 – 10000 psi	0.1	± 0.05 % FS	
(12)	Others on request			

Pressure Type Input 1 (Only for version with one sensor or more)

- A - Absolute** (Only for ranges 3 to 8)
- G - Gage** (Ranges 0 to 11)
- V - Vacuum** (Only for range 3)
- C - Compound***** (Only for ranges 3 to 8)
- D - Differential** (Only for ranges 0 to 2)

RANGE Input 2** (Only for version with two sensors or more)

Pressure Type Input 2**

RANGE Input 3** (Only for version with three sensors or more)

Pressure Type Input 3**

RANGE Input 4** (Only for version with four sensors)

Pressure Type Input 4**

Optional (Only for version with up to three sensors)

BR - Barometric Reference (15 psia)

Sensor for ambient pressure measurement. Can be used for simulated indication of absolute pressure on the other sensors.

(*) Percentage of full scale (**) Same code as input 1

(***) From -15 psi to full scale of range

Accuracy values are valid within a year and for a temperature range between 20 and 26 °C. Outside these limits add 0.005 % FS / °C, taking 23 °C as the reference temperature.

Engineering units: Temperature: °C, °F, K, °R; Pressure: psi, bar, mbar, MPa, kPa, Pa, atm, at, mmH₂O@4°C, cmH₂O@4°C, ftH₂O@4°C, inH₂O@4°C, inH₂O@60°F, torr, mmHg@0°C, cmHg@0°C, inHg@0°C, inHg@60°F, gf/cm², kgf/cm², kgf/m².

Pneumatic Connection: 1/4" NPTF (Note: 1/8" NPTF only for range 0 - 10000 psi).

Overpressure: up to twice the sensor full scale pressure (for capsules to 5000 psi).

Operating ambient: 0 to 50 °C and 90 % maximum relative humidity.

Dimensions: Portable: 140 mm x 250 mm x 80 mm (HxWxD) / Desktop: 132 mm x 308 mm x 275 mm (HxWxD) / Rack Mounting: 132 mm x 483 mm x 105 mm (HxWxD).

Weight: Portable: 1.5 kg approx. / Desktop: 3.0 kg approx. / Rack Mounting: 2.0 kg approx.

Warranty: 1 year, except for battery.

Included accessories:

- Technical manual;
- Carrying bag (only for portable version);
- Set of test leads;
- Fuse;
- Charger 100 - 240 VAC 50/60Hz (only for portable version).

Optional accessories:

- Temperature Sensor: Probe 1/5 DIN R - Order code: 04.06.0101-21;
- Probe 1/5 DIN A - Order code: 04.06.0107-21;
- Probe 1/5 DIN AL - Order code: 04.06.0102-21.

