

# ROBUST TEMPERATURE DATA LOGGERS

SL151T

SECURE DATA -

COMPACT AND ROBUST -

FULLY SEALED CONSTRUCTION -

WINDOWS SOFTWARE -

UNIQUE WIRELESS DOWNLOADING -

1 YEAR UNCONDITIONAL WARRANTY -

signatrol

## INTRODUCTION

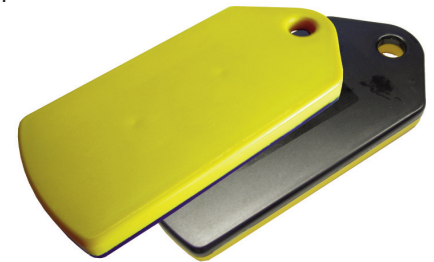
The SL151T data loggers are single channel temperature data loggers that can be used to record the precise temperature of goods in transit or storage, warehouse monitoring or any application where temperature monitoring is critical. Each data logger is battery powered, takes over 24,000 readings and has red or green alarms to indicate if temperature bounds have been exceeded without the need for a computer at the remote end.

The data logger is sealed in a crevice free and robust plastic tag with no 'bug traps', connections or entries of any kind. The tag can be conveniently located in a packing case, on a pallet or attached directly to the product.

The manifest concerning all the details of the shipment and cargo, together with alarm thresholds, are simply downloaded to the data logger by a wireless interface. The same reader retrieves the stored data which are transferred to a suitable PC or laptop where the flexible software displays all the information in an easy to read format, showing clearly if the consignment has been subjected to alarm conditions.

The SL151T features a magnetic swipe start facility where the data logger is pre-programmed but left in a dormant state until a magnet is swiped down the side of the data logger.

The readings are stored in a secure form that cannot subsequently be altered or manipulated whilst the tag also records who has read the information thereby ensuring their integrity.



## TYPICAL APPLICATION

A containerised cargo of star fruit was due to arrive direct in to Felixstowe, but the consignment went into Rotterdam and was then put on to a smaller vessel. The consignment arrived at Felixstowe three days later and was transferred to road transport for delivery to its destination.

Star fruit should be carried at 6°C to ensure that it does not ripen too quickly. The data showed that the cargo had been loaded at 9°C and that during the voyage the ships refrigeration system had reduced the temperature of the consignment to 7.5°C. When the container was loaded on to the vehicle and the refrigeration system in the container switched on the temperature of the consignment reduced to the specified 6°C. When the consignment was received, the temperature was checked and initially the recipient was satisfied because the consignment had arrived within the specified temperature limits. Later, when the fruit went on sale it was discovered that there was a problem with food quality and there was a significant loss of product but as a result of interrogating the data logger, a successful insurance claim was made.

## The Signatrol Unconditional Warranty

So confident are we in the robustness of this product, and its suitability for the rough handling it is likely to receive in transport, that we guarantee the SL151T for a period of 12 months against failure and will replace any unit found to have failed irrespective of the cause of the failure.



**Signatrol.com**  
Data Logging Solutions

HISPACONTROL S.L., Paseo Delicias 65 Bis, 28045 Madrid

Tel. 915.308.552, Fax. 914.673.170, Email. [hc@hispacontrol.com](mailto:hc@hispacontrol.com), Web. [www.hispacontrol.com](http://www.hispacontrol.com)

## Technical Specifications @ 20 °C

**Power:**  
**Battery Life:**  
**Temperature Range:**  
**Accuracy:**  
**Resolution:**  
**No. of Readings:**  
**Reading rate:**  
**Ingress protection:**  
**Measuring range:**

### SL151T

Internal battery  
 4 years  
 -30°C to +60°C  
 ±0.5°C  
 0.06°C (12 bit)  
 100 to 24,576  
 30 Secs to 100 hrs  
 IP68  
 -30 to +60°C

### Alarms:

**Green Active LED:** Yes (Flash Rate 2 to 10 seconds)\*2  
**Red Alarm LED:** Yes (Flash Rate 2 to 10 seconds)\*2

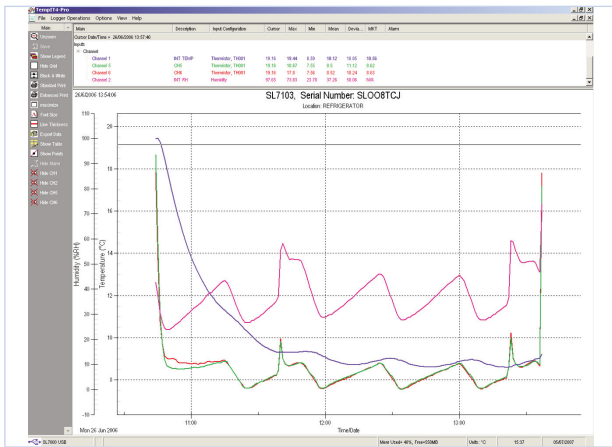
### Manifest Data:

**Response time (TC 63%):** 450 Characters  
**Delayed Start:** 7 Mins  
**Stop when full:** Yes  
 Yes

## MECHANICAL DETAILS

**Material:** Food grade ABS  
**Dimensions:** 117mm x 57mm x 10mm with Mounting Hole

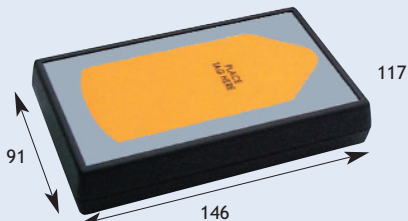
\*2 Flash Rate < 6 seconds will reduce the overall battery life of this product.



The SL150 reader connects to a standard PC serial port. Easy to use software running under Windows 2000, NT4.0, XP or Vista 32 can be used by an operator with minimal training to display data in text or graphical form and be printed on any connected printer.

### MECHANICAL DETAILS (dimensions in mm)

#### READER



#### SL151T TAG



## ORDER CODE

SL151-KIT-5

Includes 5 SL151T Data Logger tags, 1 wireless reader and software for Windows (includes 12 months software support - Single user)

SL151T

Data Logger tag only

SL150R

1 wireless reader and software for Windows supports SL150 and SL151 (includes 12 months software support - Single user)

TEMPIT-PRO-4

Professional Software for Windows

TEMPIT LITE

LITE Software for Windows - Free From Website

SL150-TIE

Pack of 100 security ties