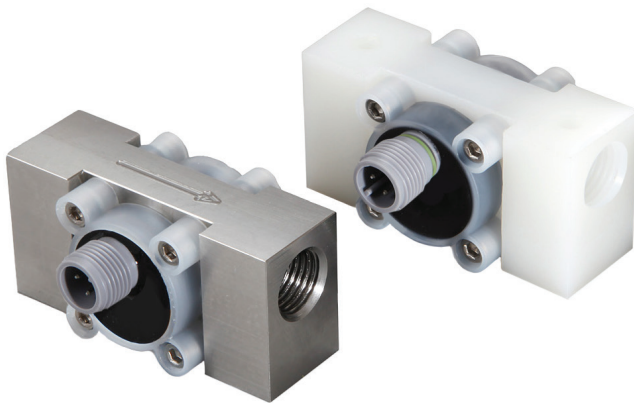


# 900 Series Flowmeter



The 900 series flowmeter is designed to give high performance and competitive pricing with 6 flow ranges from 0.05 to 15 L/min. Its choice of body materials makes this the ideal choice for the metering of aggressive chemicals, including ultra-pure water. The standard inlet is 1/4" BSPF although for OEM use alternatives are available. The bearings are made of sapphire for long life and reliability, the body is either PVDF or 316 stainless steel and as standard the 'O' ring seal is Viton®.



## IDEAL FOR

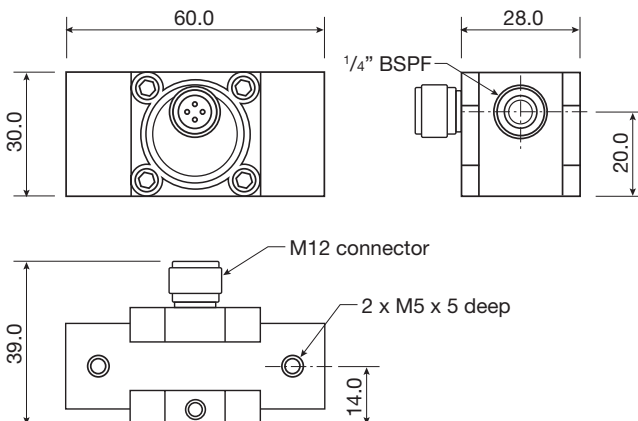
- Drink dispensing
- Laboratory tests
- Cooling equipment
- Active flow alarms
- Semiconductor plant
- OEM applications



## FEATURES

- Low cost
- PVDF or St St body
- ±0.75% Reading\*
- 1- 2% FSD
- Sapphire bearings
- Hall Effect sensor
- 6 Flow ranges
- Pulse output (NPN Std)
- Pulse output (PNP Option)
- 10 Bar rating
- Viton® seal as standard
- 1/4" BSPF (1/4" NPTF Option)
- 0.1% Repeatability
- 4.5 to 24Vdc
- -25°C Min to 125°C Max
- IP67

\* When used with a Metra-Smart instrument



**HISPACONTROL<sup>HC</sup>**  
INSTRUMENTACION INDUSTRIAL

HISPACONTROL S.L.  
Pº Delicias 65 Bis  
28045 Madrid  
Tel. 915 308 552  
hc@hispacontrol.com  
www.hispacontrol.com



## Ordering codes

<b>Model</b>
903
915
945
<b>965</b>
910
924
<b>'O' ring mtl</b>
<b>V = Viton®</b>
N = Nitrile
E = EPDM
S = Silicon
<b>Options</b>
<b>0 = Standard</b>
2 = NPN – PNP
<b>Body material</b>
<b>P = PVDF</b>
S = 316 St St
<b>Special OEM code</b>
<b>0 = Standard</b>
U = Uncalibrated

e.g. **965-VOP-0** is a flow range of 0.25 to 6.5 L/min, Viton® seal, standard, PVDF bodied flowmeter with a 6 point traceable water calibration.

## Standard Materials of Construction

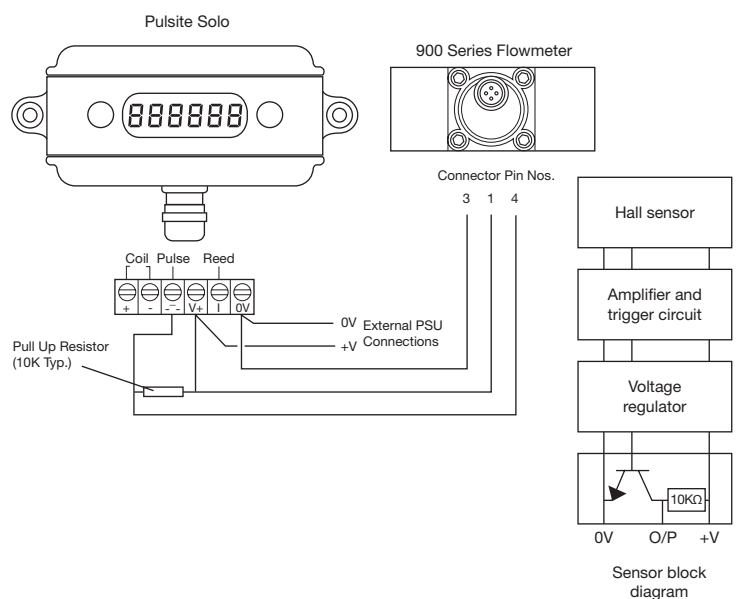
Body and cap	- PVDF or 316 St St
'O' Ring seal	- Viton®
Magnets	- Over-moulded
Bearings	- Sapphire

At the heart of the meter is a precision turbine that rotates freely on robust sapphire bearings and contains over-moulded magnets that are detected through the chamber wall by a Hall effect detector. The output is a NPN pulse that is readily interfaced with most electronic display or recording devices. This combination of materials and technology ensures a long life product with reliable operation throughout. There are two temperature options 125°C or 60°C. The 60°C unit is fitted with two LEDs to monitor the power and pulse output, both NPN and PNP transistor outputs are available on each flow meter.



## TECHNICAL SPECIFICATIONS

Model	Flow range L/Min	Linearity % FSD	Typical Freq. Hz.	Approx 'K' Factor
903	0.05 - 0.5	2.0	142	17000
915	0.12 - 1.5	2.0	175	7000
945	0.20 - 4.5	1.5	260	3500
965	0.25 - 6.5	1.5	230	2100
910	0.30 - 10.0	1.0	235	1420
924	0.50 - 15.0	1.0	245	980



**TITAN ENTERPRISES LTD.**

## Weight (kg)

St St	0.192
PVDF	0.065

# PULSITE Solo



**5 year**  
typical battery life

Titan's flexible, battery powered Pulsite Solo digital rate and total indicator with dc power capability



## General Information

These panel or surface mounting digital instruments that require no external power, are designed to be as versatile as possible permitting customisation to suit the application. Programming is simple the front panel keys are used with easy to follow screen prompts.

- Clear 6 digit LCD display with enunciators
- 8mm high main digits with 2.5mm enunciators
- Simple setting procedure
- Password protected
- Programmable scaling for rate and total
- Programmable time base for rate
- 96 x 48mm 1/8 DIN case
- Environmentally protected tough polymer housing
- Panel or surface mount
- Replaceable battery
- Front panel programmable
- 5 to 24 V dc power with the battery as backup
- Coil and switch inputs
- Logic/transistor inputs (external power recommended)



## Technical Specification

Display	IP64 Enclosure
Enclosure	Tough polymer housing
Display	Trans-reflective LCD display with 6 x 8mm high numerals with 2.5mm enunciators
Power	
Solo	Battery 5 years typical life External 5 – 24V dc
Input	
Pulse	2kHz max
Coil	3mV – 24V sine wave, 2 KHz max
Switch:	Limited to 100Hz
Unit Display	9.99999 to 999999
Enunciators	
Total	No units displayed, Gall, cc, kg, gms or Ltr
Rate	Total time units – Sec, min & Hr